

## CREATING ENVIRONMENTS

ECOLOGICALLY DRIVEN INFRASTRUCTURAL AND PERFORMATIVE URBAN LANDSCAPES



Waterside Way, Tring, UK

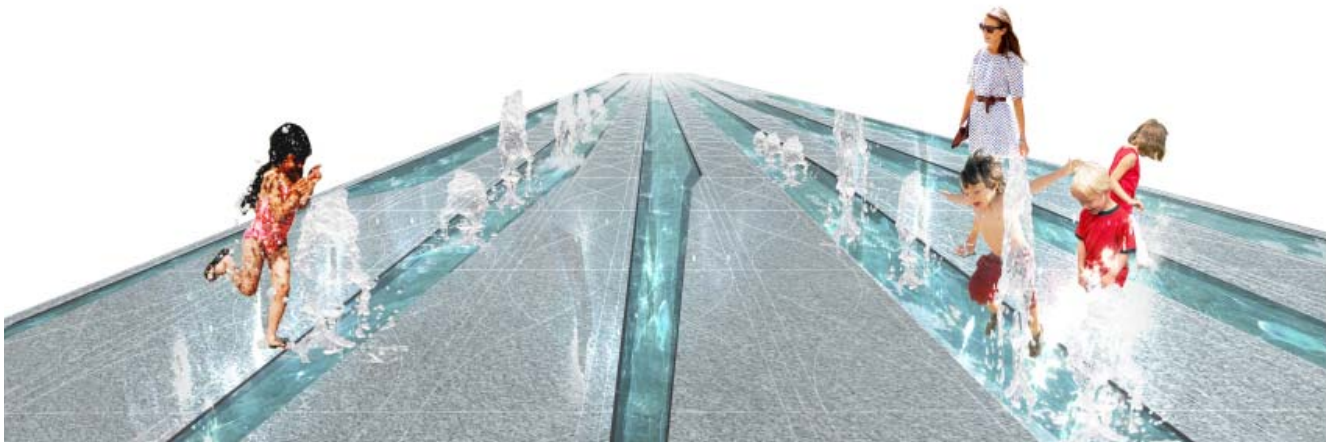


Phala Kung Marina Resort, Thailand



Prince Street Penthouse Garden, NY

**m3project** is an innovative landscape and urban design practice based in New York. The firm's work ranges in scale from the design of large city-regions to intimate garden spaces and resort destinations; the design of large public parks and urban infrastructural landscapes to housing and mixed-use developments; and from the reclamation of post-industrial landscapes to the preservation of large-scale natural resources. The practice is a dynamic and evolving interdisciplinary collaborative that responds to the shifting and advancing conditions of modern life. In the development of each project, inclusive of their varying scope, scale, territory, context, and economy, the design resolutions are driven with landscape as the organizing medium of conceptual articulation. The process excels in the synthesis of complex projects and aims to respond with imagination and clarity, crafting ecologically and culturally significant environments.



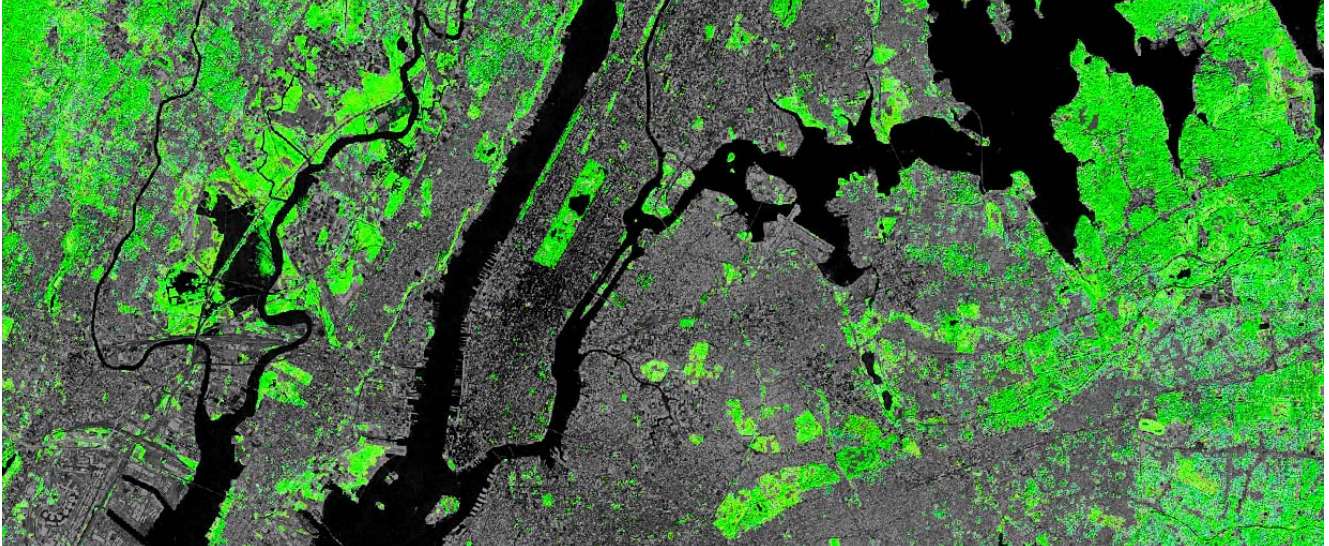
View of the proposed Parque DeL Lago's Water Strip - transforming what is now Quito's Mariscal Sucre International Airport runway strip into a new public urban platform



Illustrative Plan of Quito's Parque DeL Lago - crafting the park's terrain and hydrological networks sets the framework for the growth of the park over time

## CREATING ENVIRONMENTS

ECOLOGICALLY DRIVEN INFRASTRUCTURAL AND PERFORMATIVE URBAN LANDSCAPES



Manipulated satellite photography illustrating the expanse of the eco-urban dichotomy of the New York City-Region.

**Michael Flynn** is the founder and director of **m3project**, an innovative landscape and urban design practice based in New York. His work has been exhibited internationally and published in leading architectural journals. Current projects have focused on ecologically driven infrastructural and performative urban landscapes and mixed-use developments, most notably, the design of Parque del Lago in Quito, Ecuador, a winning entry in the Parque del Lago International Design Competition. Michael is also a member of the Board of Directors of Lucent Group, a strategic land investment and development company based in the UK, where he advises on the acquisition and development of potential land assets.

Prior to founding m3project, Michael was an associate at the internationally renowned design practice of James Corner Field Operations. Michael held an instrumental role in the creation, development, and success of numerous world class projects, including: project manager of design for Fresh Kills Park in New York, leading a design team in the completion of the Master Plan document and publication; project designer on the High Line design team awarded first place in the High Line International Design Competition in New York City; project manager of the MGM/Mirage City Center project in Las Vegas; project manager and design director for the Westport Waterfront Redevelopment on the Middle Branch of Chesapeake Bay, in Baltimore, MD; and project manager of the Heseg Foundation Headquarters in Tel Aviv, Israel. The work has been published extensively in leading academic and professional journals and has been exhibited internationally, including at the Venice Biennale; the Museum of Modern Art, New York; the Rotterdam Biennale; and the Zollverein Entry Exhibition, Essen Germany.

Michael holds a BLA with honors from California Polytechnic State University (1999) and an MLA with distinction from Harvard University (2004), where he was awarded the Charles Elliot Traveling Fellowship Alternate ('04 & '06).

## CREATING ENVIRONMENTS

ECOLOGICALLY DRIVEN INFRASTRUCTURAL AND PERFORMATIVE URBAN LANDSCAPES

**Michael Flynn**, founder and director, m3project

Michael is the founder and director of m3project and a member of the Board of Directors of Lucent Group, UK. He holds a BLA with honors from California Polytechnic State University (1999) and an MLA with distinction from Harvard University (2004), where he was awarded the Charles Elliot Traveling Fellowship Alternate ('04 & '06). His work has been published extensively in leading academic and professional journals and has been exhibited internationally, including at the Venice Biennale; the Museum of Modern Art, New York; the Rotterdam Biennale; and the Zollverein Entry Exhibition, Essen Germany.

<b>education</b>	Harvard University, Graduate School of Design Master of Landscape Architecture with Distinction, 2004 California Polytechnic State University, College of Architecture and Environmental Design Bachelor of Landscape Architecture with Honors, 1999 Interkantonaales Technikum, Hochschule für Technik, HTR, Switzerland Landschaftsarchitektur Diplomstudien Exchange Program, 1996-97
<b>professional</b>	m3project, New York, New York, 2009 - present James Corner Field Operations, New York, New York, 2004 - 2009 StoSS Landscape Urbanism, Boston, Massachusetts, 2003 - 04 Martha Schwartz, Inc., Cambridge, Massachusetts, 2002 - 03 Design Focus Design Group, Saratoga, California, 1999 - 02
<b>advisory</b>	Member of the Board of Directors, Lucent Group, UK – land acquisition and development, 2010 - present
<b>academic</b>	Invited Studio Review Critic, Urban Design Studio, Columbia University, NY, 2007 Teaching Assistant, GSD 1211, Third Semester Core Studio, Planning and Design of Landscapes, 2004 Research Assistant, GSD, Alan Berger – research on developing urban landscapes, 'drosscape', 2003 Lecturer, California Polytechnic University, Design Seminar, Graphic Representation, 1999 Lecturer, California Polytechnic University, Design Seminar, Graphic Representation, 1998
<b>awards</b>	Parque Del Lago, Quito, Ecuador, International Design Competition – awarded Third Place, 2009 Charles Elliot Traveling Fellowship Alternate, Harvard University, 2006 Charles Elliot Traveling Fellowship Alternate, Harvard University, 2004 Landschaftsarchitektur Diplomstudien Exchange Program, HTR, Switzerland, 1997
<b>publications</b>	Post-Fordist Public Works, Charles Waldheim, Harvard University Press, 2006 Post-Fordist Public Space, 306090, Princeton Architectural Press, 2005 StudioWorks 11, Harvard Graduate School of Design, Fall 2003 StudioWorks 10, Harvard Graduate School of Design, Fall 2002/Spring 2003
<b>practice</b>	m3project, New York, New York, 2009 - present Parque Del Lago, Quito, Ecuador Waterside Way Sustainable Development Plan, London, UK Derwent Forest Strategic Reclamation and Economic Revitalization Plan, UK Field Operations, New York, New York, 2004 - 2009 MGM/Mirage City Center, Las Vegas, Nevada Fresh Kills Park: lifescape, Staten Island, New York The High Line, New York, New York Heseg Foundation, Tel Aviv, Israel Lake Ontario Park, Toronto, Canada Westport Waterfront Redevelopment, Baltimore, Maryland Governors Island, New York StoSS Landscape Urbanism, Boston, Massachusetts, 2003 - 04 Mt. Tabor Reservoir, Portland, Oregon Sugar Hill Crossing, Salt Lake City, Utah Martha Schwartz, Inc., Cambridge, Massachusetts, 2003 Garibaldi-Repubblica Urban Enhancement, Milan, Italy Alan Berger, Harvard GSD – research on developing urban landscapes, 'drosscape', 2003 South Platte River Corridor, Sustainable Urbanization Strategy, Denver, Colorado